

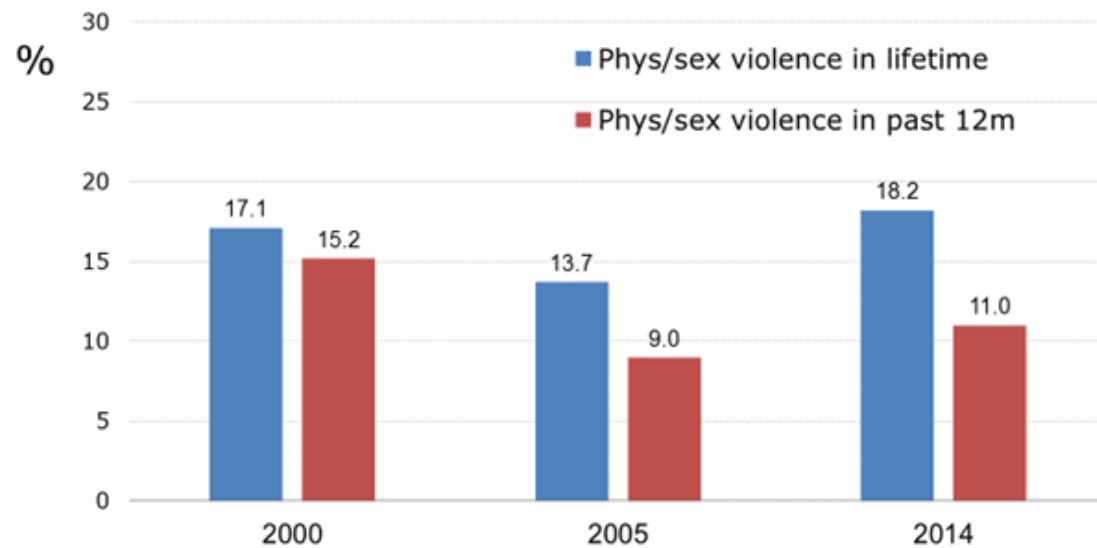
# Has intimate partner violence in Cambodia changed in the past 15 years?

## A case for an innovative and more robust indicator to monitor SGBV-related SDG targets

Henrica A.F.M. (Henriette) Jansen, Pauline Gulliver, HE Nhean Sochetra, Sok Kosal



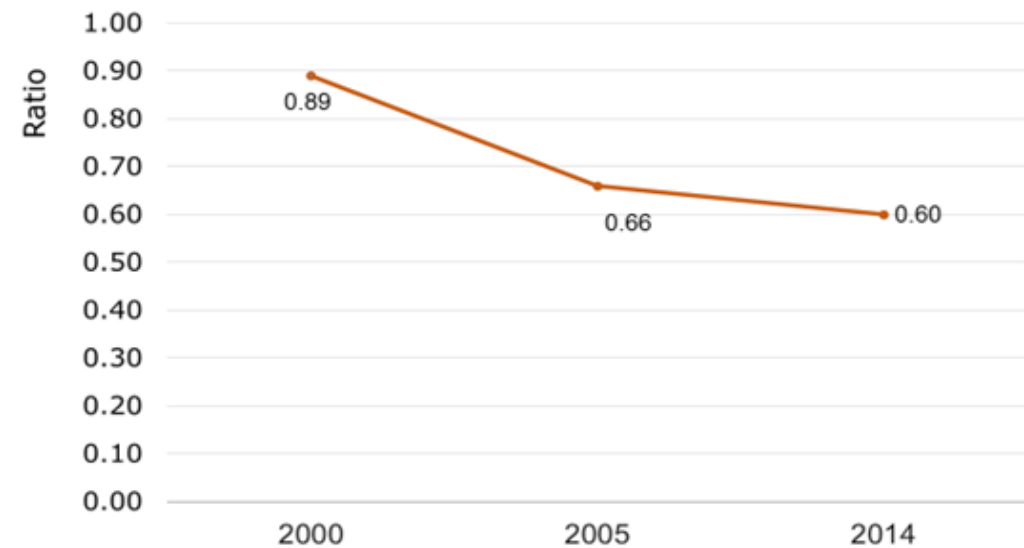
Fig 1. Cambodia DHS: Proportion of women (15-49 years old) experiencing physical and/or sexual violence by a partner



### SDG Indicator 5.2.1:

Proportion of ever-partnered women and girls aged 15 years and older subjected to physical, sexual or psychological violence by a current or former intimate partner, **in the last 12 months**, by form of violence and by age group

Fig 2. Cambodia DHS: Ratio of prevalence of physical and/or sexual violence in past 12 months over lifetime



### Alternative Indicator (Ratio):

Proportion of ever-partnered women subjected to ( ...) violence by an intimate partner, **in the last 12 months**

Proportion of ever-partnered women subjected to ( ...) violence by a an intimate partner, **in her lifetime**